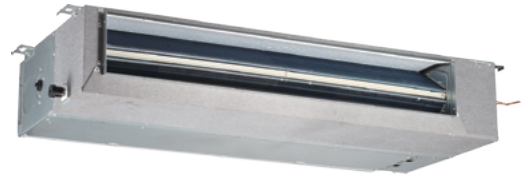


Medium Static Pressure Duct

Fresh air intake

6-step static pressure control on 2.2kW to 7.1kW models and 10-step static pressure control on 8kW to 14kW units (requires latest generation wired controllers)

Drain pump with 750mm pump head fitted as standard
Flexible installation for the air inlet may be positioned either on the underside or the rear of the unit



Optional wireless remote controller



WL-12D-CM WL-12B-CM

Optional wired controller



WR-86KD-CM WR-120G-CM

Model			42VD007H115003016	42VD009H115003016	42VD012H115003016
Power supply			1 phase, 220-240V, 50Hz		
Cooling ¹	Capacity	kW	2.2	2.8	3.6
		kBtu/h	7.5	9.6	12.3
Power input		W	40	40	45
Heating ²	Capacity	kW	2.6	3.2	4.0
		kBtu/h	8.2	10.9	13.6
Power input		W	40	40	45
Air flow rate ³		m ³ /h	520/480/440/400/360/330/300		580/540/500/460/430/400/370
External static pressure		Pa	10 (0~50)		
Sound pressure level ⁴		dB(A)	35/35/34/34/33/32/31		37/37/36/36/35/34/33
Unit	Net dimensions ⁵ (WxHxD)	mm	780×210×500		
	Packed dimensions (WxHxD)	mm	870×285×525		
	Net/Gross weight	kg	18/21		
Pipe connections	Liquid/Gas pipe	mm	Φ6.35/ Φ12.7		
	Drain pipe	mm	OD Φ25		

Model			42VD016H115003016	42VD020H115003016	42VD024H115003016
Power supply			1 phase, 220-240V, 50Hz		
Cooling ¹	Capacity	kW	4.5	5.6	7.1
		kBtu/h	15.4	19.1	24.2
Power input		W	92	92	98
Heating ²	Capacity	kW	5.0	6.3	8.0
		kBtu/h	17.1	21.5	27.3
Power input		W	92	92	98
Air flow rate ³		m ³ /h	800/740/680/620/540/480/400	830/760/720/680/640/600/560	1000/960/900/840/780/720/680
External static pressure		Pa	10 (0~50)		
Sound pressure level ⁴		dB(A)	38/37/37/36/35/34/33	38/38/37/36/35/34/33	40/39/38/37/36/35/34
Unit	Net dimensions ⁵ (WxHxD)	mm	1000×210×500		1220×210×500
	Packed dimensions (WxHxD)	mm	1115×285×525		1335×285×525
	Net/Gross weight	kg	21.5/25		27.5/31.5
Pipe connections	Liquid/Gas pipe	mm	Φ6.35/ Φ12.7		Φ9.53/Φ15.9
	Drain pipe	mm	OD Φ25		

Model			42VD028H115003016	42VD030H115003016	42VD036H115003016	42VD048H115003016
Power supply			1 phase, 220-240V, 50Hz			
Cooling ¹	Capacity	kW	8.0	9.0	11.2	14.0
		kBtu/h	27.3	30.7	38.2	47.8
Power input		W	110	120	200	250
Heating ²	Capacity	kW	9.0	10.0	12.5	15.5
		kBtu/h	30.7	34.1	42.7	52.9
Power input		W	110	120	200	250
Air flow rate ³		m ³ /h	1260/1180/1100/1020/940/860/780	1500/1430/1360/1290/1210/1140/1080	1960/1860/1760/1660/1560/1460/1360	
External static pressure		Pa	20 (10~100)			
Sound pressure level ⁴		dB(A)	44/43/42/41/39/38/37		47/46/44/43/41/39/37	47/46/44/43/41/39/38
Unit	Net dimensions ⁵ (WxHxD)	mm	1230×270×775			1290×300×865
	Packed dimensions (WxHxD)	mm	1355×350×795			1400×375×925
	Net/Gross weight	kg	36.5/44.5	37/45		46.5/55.5
Pipe connections	Liquid/Gas pipe	mm	Φ9.53/Φ15.9			
	Drain pipe	mm	OD Φ25			

Notes:

- Indoor temperature 27°C DB, 19°C WB; outdoor temperature 35°C DB; equivalent refrigerant piping length 7.5m with zero level difference.
 - Indoor temperature 20°C DB; outdoor temperature 7°C DB, 6°C WB; equivalent refrigerant piping length 7.5m with zero level difference.
 - Each model's 7 airflow rate options are listed in order, from highest to lowest.
 - Each model's 7 sound pressure levels are listed in order from highest to lowest and correspond to the model's 7 airflow rate options (see Note 3).
Sound pressure level is measured 1.4m below the unit in a semi-anechoic chamber.
 - Unit body dimensions given are the largest external dimensions of the unit, including hanger attachments.
- All specifications are measured at standard external static pressure.